



COVID-19 Vaccination Report - Two Rivers Health District : Dec 15, 2020 - Jul 12, 2021

The graphs depict the current status of COVID-19 vaccination in Two Rivers Public Health District (TRPHD) as of Jul 13, 2021. This includes residents of **Buffalo, Dawson, Franklin, Gosper, Harlan, Kearney & Phelps** counties (97,132). Of these, 81,216 persons are currently eligible for the vaccine (aged 12 years or more)¹. Currently, we are reporting vaccinated numbers by total population in TRPHD, to have a better sense of the overall vaccine coverage in the community.

- Graphs 1 & 2 show relative number of **residents of each county** who have received one or two shots of the vaccine from **Dec 15, 2020 - Jul 12, 2021**.
 - **Graph 1** shows the number of TRPHD residents (all ages) per county, and orders counties by decreasing percentage of persons who received one or two doses of the vaccine.
 - **Graphs 2-6** shows the number of persons **aged 0-17, 18-29, 30-49, 50-64 & 65+ years** in TRPHD, and orders each county by decreasing percentage of persons who received one dose and those fully vaccinated.

Key Takeaways

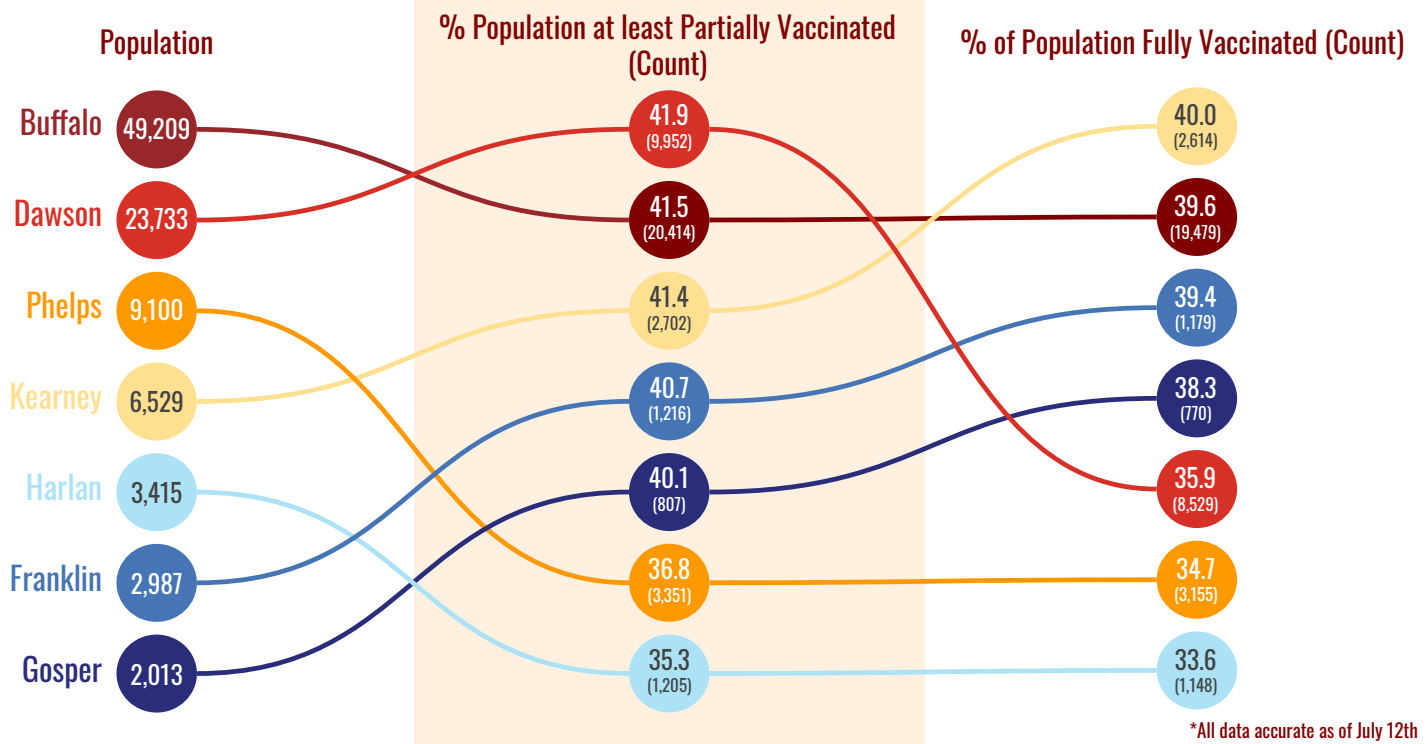
1. *As of Jul 12, 2021, 38% of TRPHD's total population has been fully vaccinated. 45.3% of all eligible residents (12 years and over) are fully vaccinated. 40.8% of the population has received at least one dose of vaccine.*
2. *Weekly vaccination rates across the health district have dropped by almost 50% in the past 6 weeks (Jun-Jul) compared to the previous 6-week period (Apr-May). Less than 250 residents of TRPHD received their first dose of vaccine last week.*
3. *In the past two months,, less than 10 residents/week of Franklin, Gosper and Harlan counties accessed COVID-19 vaccinations for the first time (first dose of 2-dose vaccine, or single-dose vaccine).*
4. *As of July 12, about 49% of Kearney city, 54% of Lexington and 46% of Holdrege city residents have received at least one dose of vaccine. While this is encouraging, some residents in these cities seem to have postponed the second dose beyond the prescribed time (3 or 4 weeks), which is inadvisable.*
5. *There is fairly robust evidence that single dose of mRNA vaccine may not be fully effective in protecting people from newer COVID variants (like delta, gamma variants). TRPHD strongly urges all residents to avail of the full vaccination schedule (1 or 2 doses as indicated) through the health department or their clinic service.*
6. *Two Rivers Health Department has scheduled mobile vaccination clinics at multiple sites across the seven counties to distribute vaccines and to focus on areas of potential shortfall. Those eligible for the vaccine are advised to refer to the vaccination clinic schedule at www.trphd.org and book their appointments.*

¹ For details on eligible persons by county, see appendix 1



- Vaccine formulations by Pfizer and Moderna (2 doses) and Johnson & Johnson (single dose) are calculated accordingly
- Each county is depicted by a colored circle, and the relative position of each corresponds to the proportion vaccinated. Actual numbers (count) are included in parenthesis.
- Data described from Dec 15, 2020 - Jul 12, 2021. All residents of the seven counties years are included.
- **Overall, 38% of the total population in Two Rivers Health District is now fully vaccinated; 40.8% have received at least one dose of COVID vaccine.**

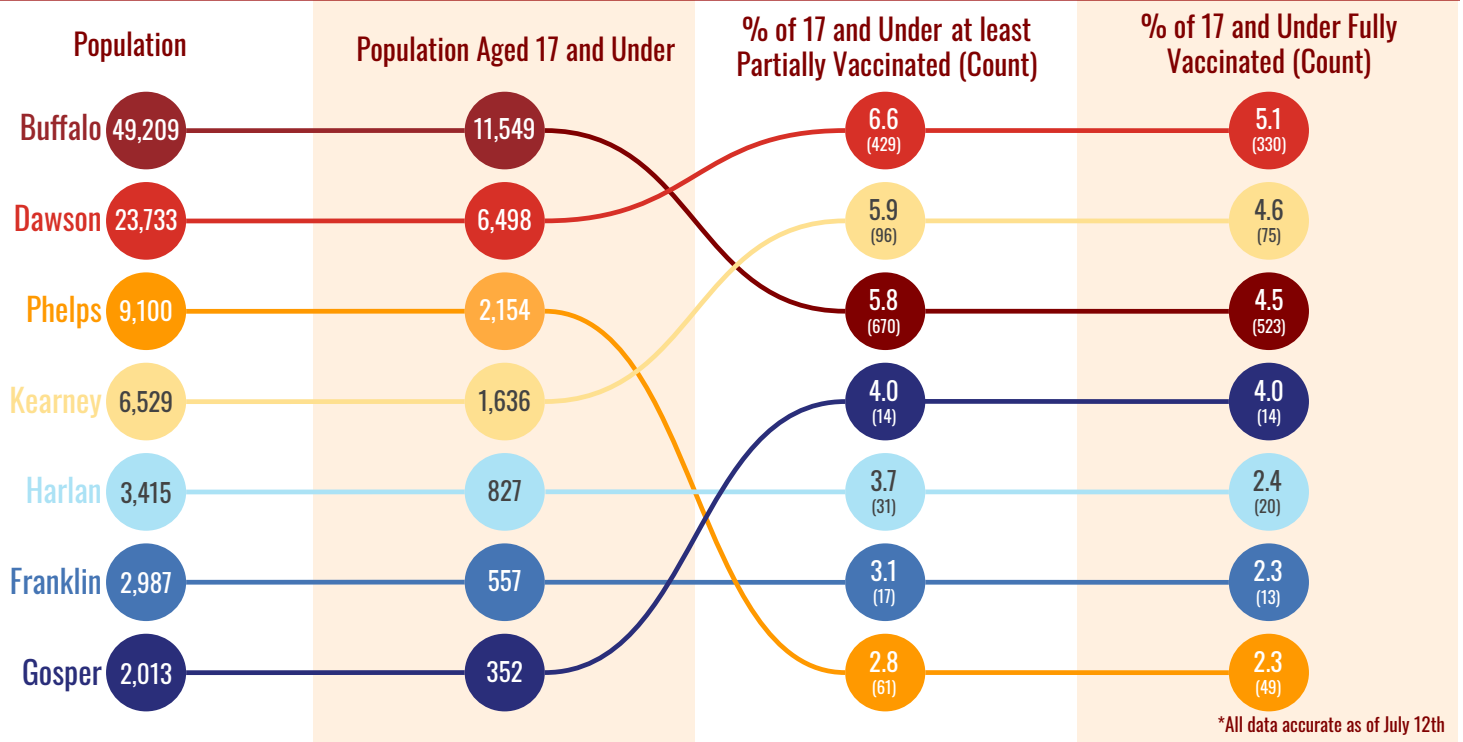
Vaccinations of Total Population in TRPHD





- Vaccine formulations by Pfizer and Moderna (2 doses) and Johnson & Johnson (single dose) are calculated accordingly
- Each county is depicted by a colored circle, and the relative position of each corresponds to the proportion vaccinated. Actual numbers (count) are included in parenthesis.
- Data is described from Dec 15, 2020 - Jul 12, 2021. All residents of the seven counties aged 0-17 years are included.
- **Overall, 4.5% of those aged 0-17 years in Two Rivers Health District are now fully vaccinated; 5.7% have received at least one dose of COVID vaccine.**

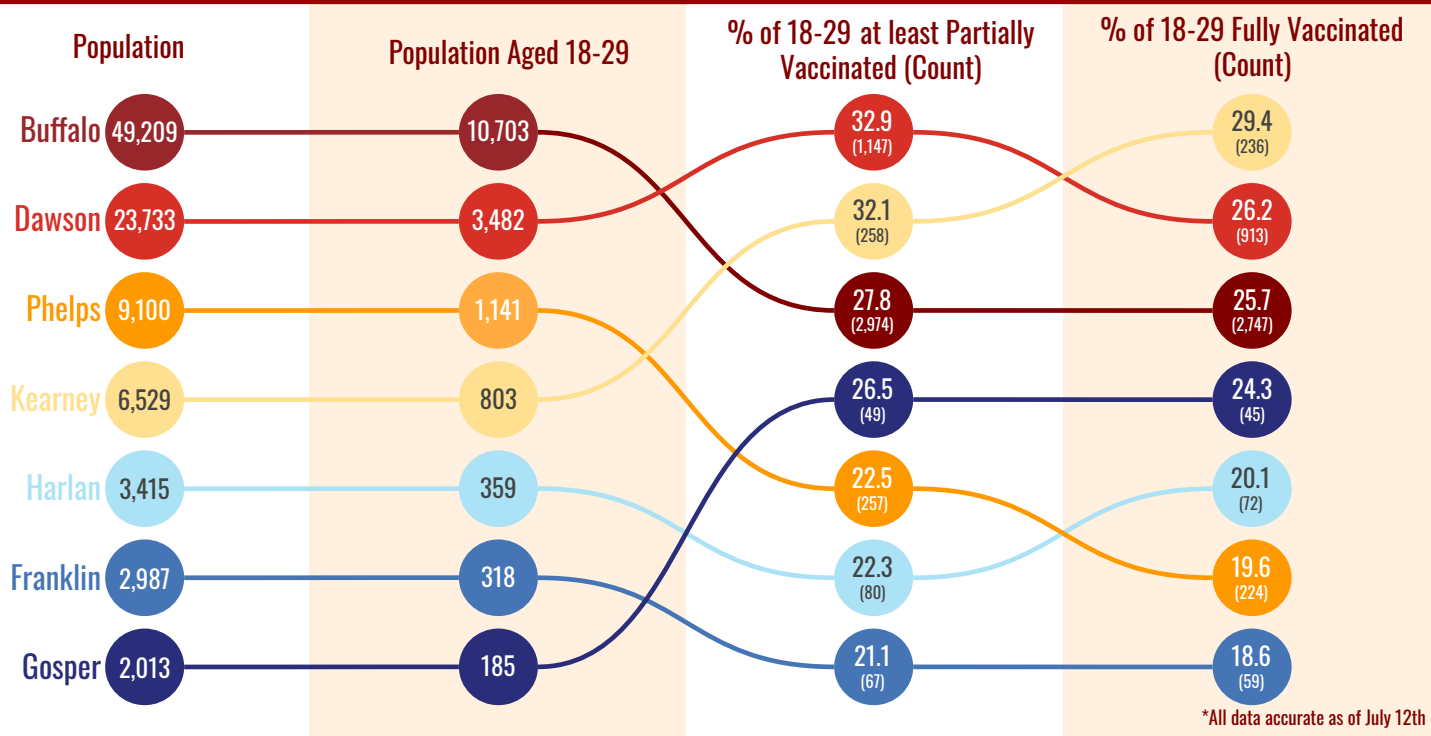
Vaccinations of 17 and Under in TRPHD





- Vaccine formulations by Pfizer and Moderna (2 doses) and Johnson & Johnson (single dose) are calculated accordingly
- Each county is depicted by a colored circle, and the relative position of each corresponds to the proportion vaccinated. Actual numbers (count) are included in parenthesis.
- Data is described from Dec 15, 2020 - Jul 12, 2021. All residents of the seven counties aged 18-29 years are included.
- **Overall, 25.3% of those aged 18-29 years in Two Rivers Health District are now fully vaccinated; 28.4% have received at least one dose of COVID vaccine.**

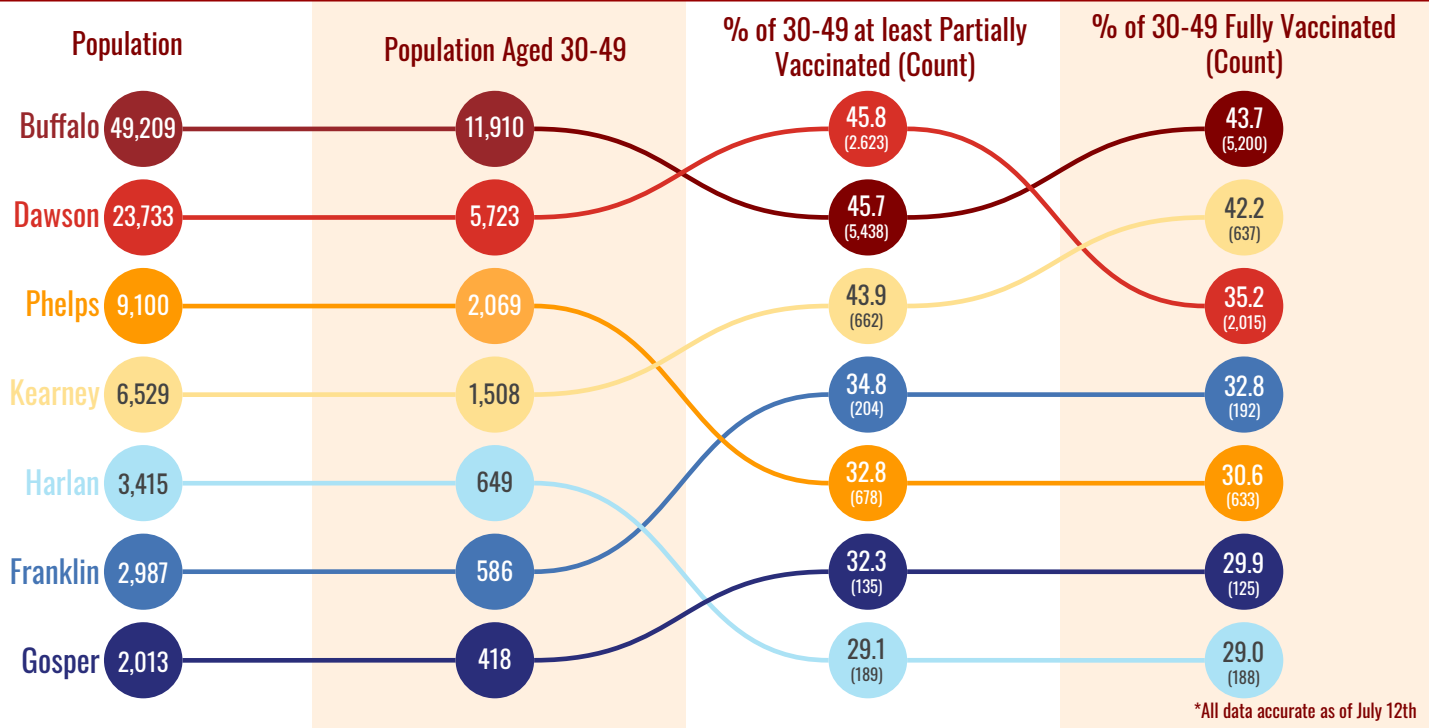
Vaccinations of 18-29 in TRPHD





- Vaccine formulations by Pfizer and Moderna (2 doses) and Johnson & Johnson (single dose) are calculated accordingly
- Each county is depicted by a colored circle, and the relative position of each corresponds to the proportion vaccinated. Actual numbers (count) are included in parenthesis.
- Data is described from Dec 15, 2020 - Jul 12, 2021. All residents of the seven counties aged 30-49 years are included.
- **Overall, 39.3% of those aged 30-49 years in Two Rivers Health District are now fully vaccinated; 43.4% have received at least one dose of COVID vaccine.**

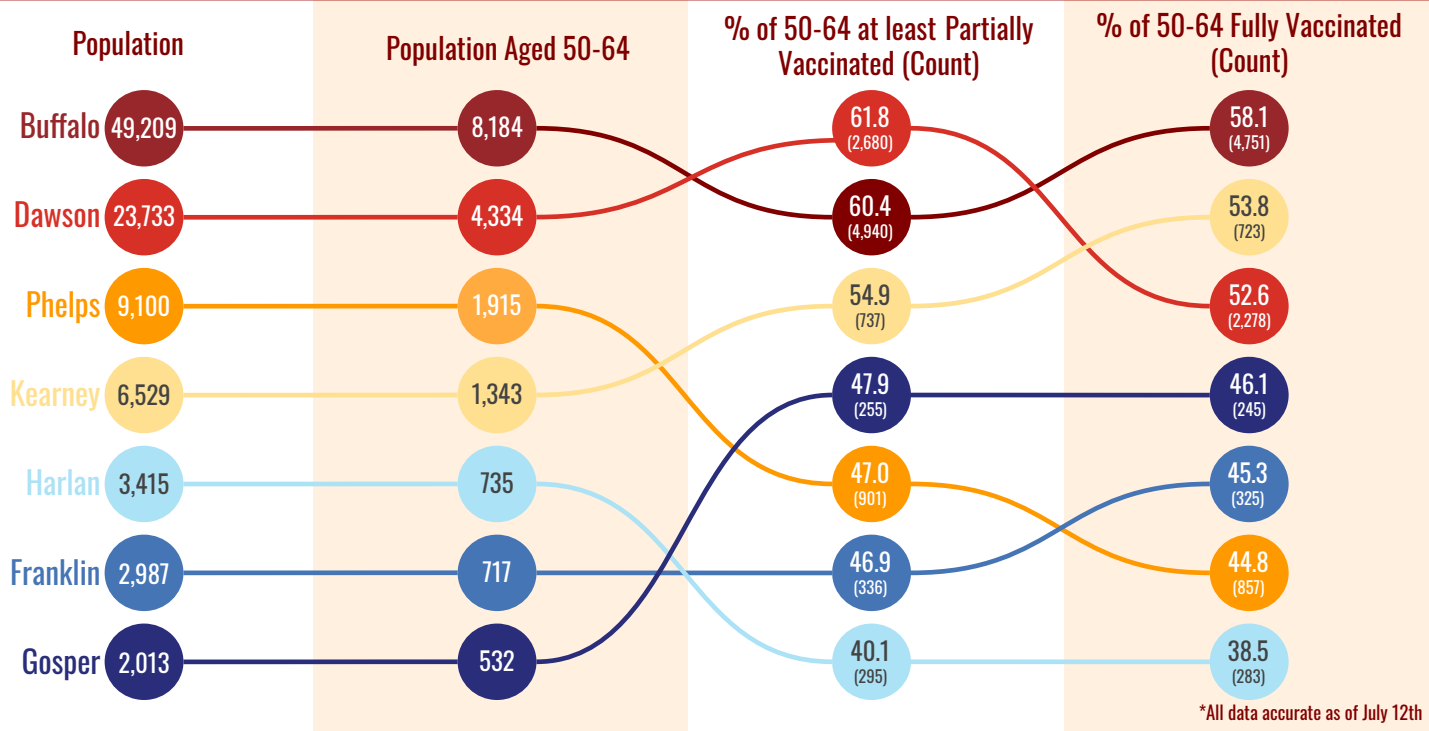
Vaccinations of 30-49 in TRPHD





- Vaccine formulations by Pfizer and Moderna (2 doses) and Johnson & Johnson (single dose) are calculated accordingly
- Each county is depicted by a colored circle, and the relative position of each corresponds to the proportion vaccinated. Actual numbers (count) are included in parenthesis.
- Data is described from Dec 15, 2020 - Jul 13, 2021. All residents of the seven counties aged 50-64 years are included.
- **Overall, 53.2% of those aged 50-64 years in Two Rivers Health District are now fully vaccinated; 57% have received at least one dose of COVID vaccine.**

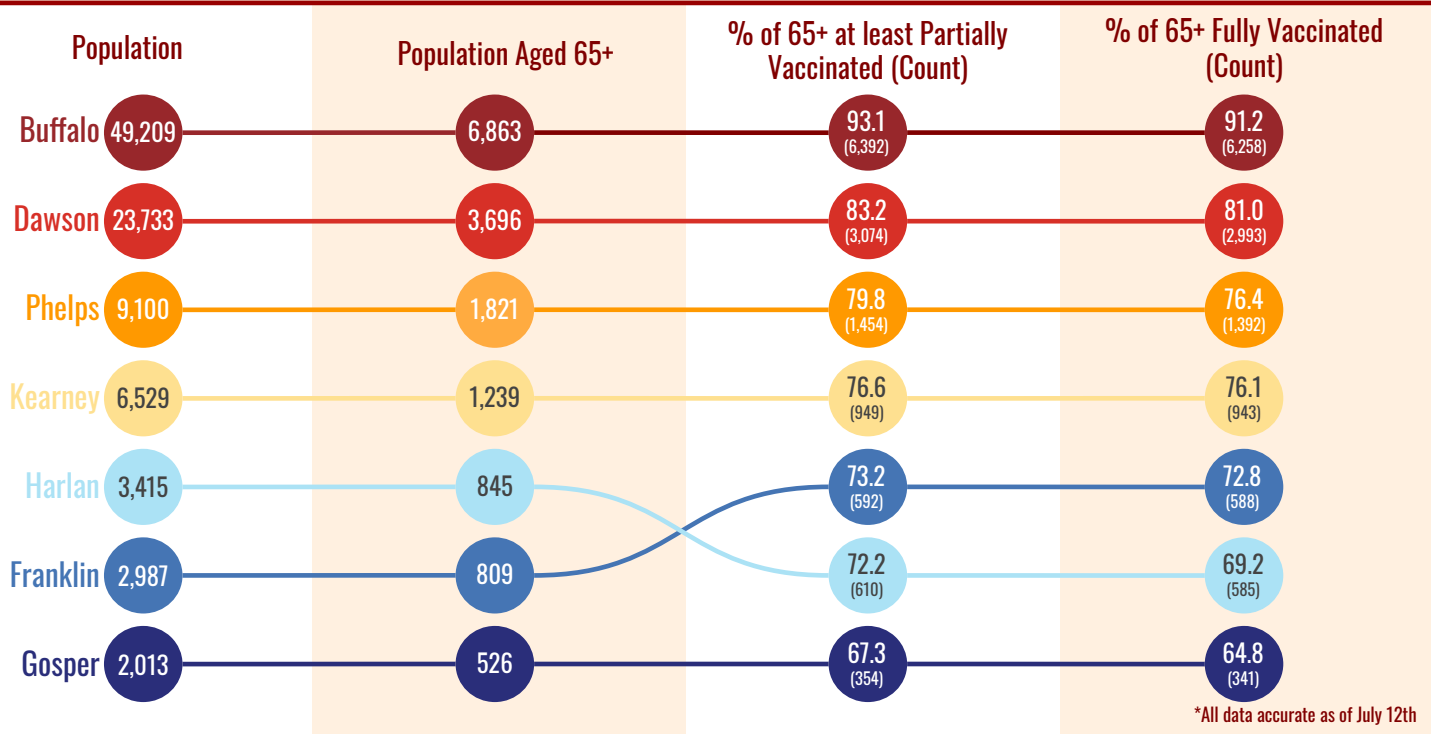
Vaccinations of 50-64 in TRPHD





- Vaccine formulations by Pfizer and Moderna (2 doses) and Johnson & Johnson (single dose) are calculated accordingly
- Each county is depicted by a colored circle, and the relative position of each corresponds to the proportion vaccinated. Actual numbers (count) are included in parenthesis.
- Data is described from Dec 15, 2020 - Jul 13, 2021. All residents of the seven counties aged 65 years and over are included.
- **Overall, 82.5% of those aged 65+ years in Two Rivers Health District are now fully vaccinated; 84.5% have received at least one dose of COVID vaccine.**

Vaccinations of 65+ in TRPHD





APPENDIX 1

Background

The Two Rivers Public Health Department (TRPHD) covers 7 counties in central Nebraska, reaching 96,986 people who live and work in the health district spread across roughly 4663 square miles. Over three quarters of residents live in Buffalo and Dawson county, a tenth live in Phelps county, and the remaining 15% is spread somewhat comparably among the four counties of Kearney, Harlan, Franklin and Gosper in decreasing order of population. The largest cities are Holdrege (pop. 5408), Lexington (pop. 10115) and Kearney (pop. 33867) meaning that well over half the residents of TRPHD live in three cities, and over a third are in Kearney alone. The population of all 7 counties in TRPHD are shown below.

County	Population
Buffalo	49209
Dawson	23733
Franklin	2987
Gosper	2013
Harlan	3415
Kearney	6529
Phelps	9100
TRPHD total	96986
Nebraska state	1,934,408
United States	328,239,523

Vaccine-eligible population

The total COVID-19 vaccine-eligible population of Two Rivers Health District is currently about 81,216. This includes all residents over the age of 12 years living in the seven counties that make up the district. The table below describes the eligible population in each of the seven counties divided by age category.

	12-29 YRS	30-49 YRS	50-64 YRS	65+ YRS	TOTAL(12+ YRS)
TRPHD	24794	22863	17760	15799	81216
BUFFALO	14,314	11910	8184	6863	41,271
DAWSON	5,750	5723	4334	3696	19,503
FRANKLIN	515	586	717	809	2,627
GOSPER	333	418	532	526	1,809
HARLAN	625	649	735	845	2,854
KEARNEY	1,385	1508	1343	1239	5,475
PHELPS	1,872	2069	1915	1821	7,677