

About Us

The Two Rivers Public Health Department (TRPHD) serves a population of 97,423 across seven counties in South-Central Nebraska, spanning 4,663 square miles. TRPHD is the 4th largest health district in Nebraska, its population mostly clustered around the I-80 corridor. Over 3/4th of residents live in Buffalo & Dawson, 10% in Phelps, and 15% in Kearney, Harlan, Franklin and Gosper Counties in decreasing order. The largest cities are Holdrege (pop. 5,515), Lexington (pop. 10,348) and Kearney (pop. 33,790); over half of the residents of TRPHD live in these three cities, over a third in Kearney city alone.

TRPHD engages collaborative partners, community leaders, and the public to promote healthy and safe communities for all who live within the district. TRPHD envisions a health district where all are able to safely and actively live, learn, work, and play in their communities. TRPHD facilitates collaborative, partnerships, and unique approaches that educate, empower, and engage local community partners, health providers, political decision-makers, community leadership, and the public.

Report Summary

- About 20% of all tests for respiratory infectious diseases (Flu, RSV, COVID) returned positive in the past week, driven primarily by Flu A and RSV.
- Hospitalizations due to Influenza-like-Illnesses began to rise across TRPHD since mid-December, including a disproportionately higher number of 50-64 year olds in early January.
- COVID incidence is low; new RSV cases have shown a slight uptick in the past 2 weeks.

Data Insights

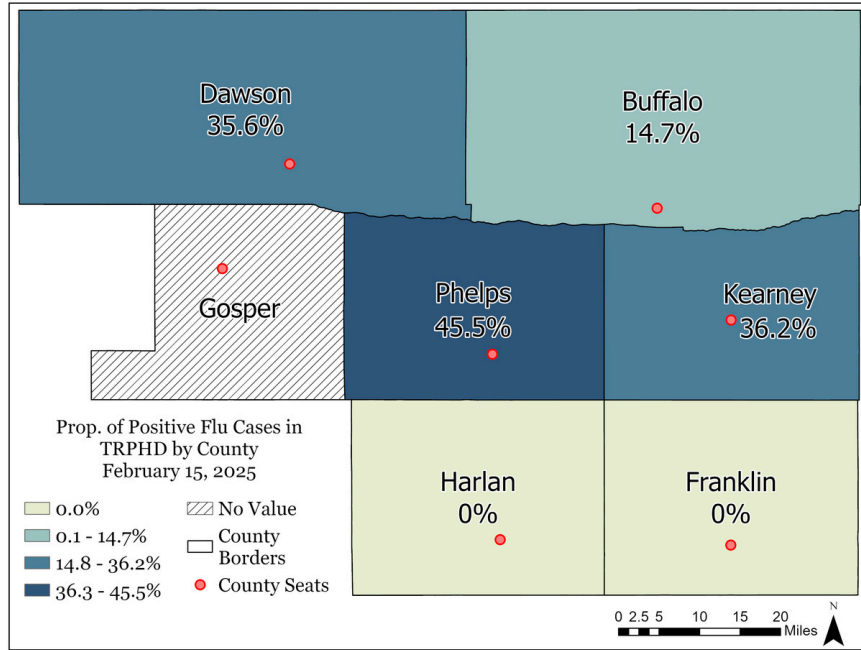
- Overall Respiratory Disease Positivity Rate is calculated by the following equation:
 - We applied a 3% overlap adjustment between Flu A and Flu B positive tests to account for the likelihood that a small percentage of individuals tested positive for both.

$$PR = \frac{((PosFluA + PosFluB - 0.03 \times (TotalFluTests)) + PosRSV + PosCOVID)}{(TotalFluTests + TotalRSVTests + TotalCOVIDTests)}$$

- Flu and RSV county data is collected from Nebraska Flu ILI Surveillance.
- COVID-19 county data is collected from the National Electronic Disease Surveillance System (NEDSS).
- Weekly Case counts of any infection exceeding 150% of the corresponding week in the previous year will trigger an alert for heightened incidence across the district.

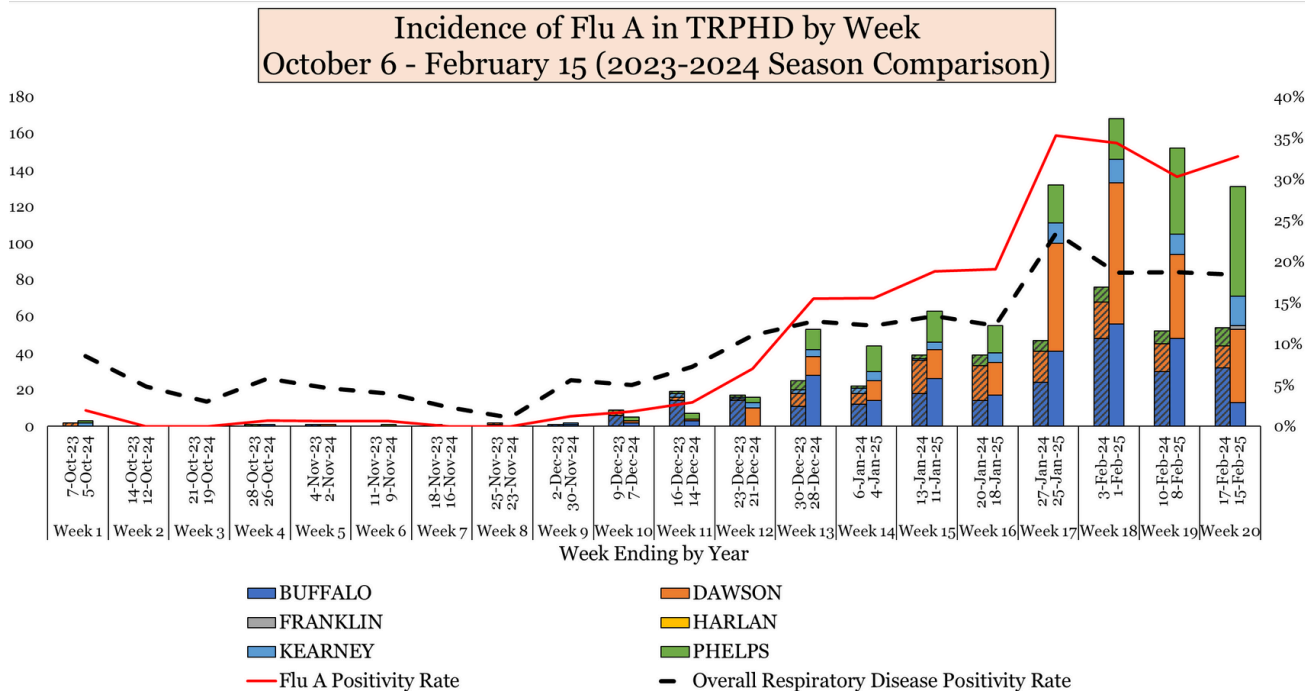
TRPHD Flu Cases

February 15, 2025



Influenza - A

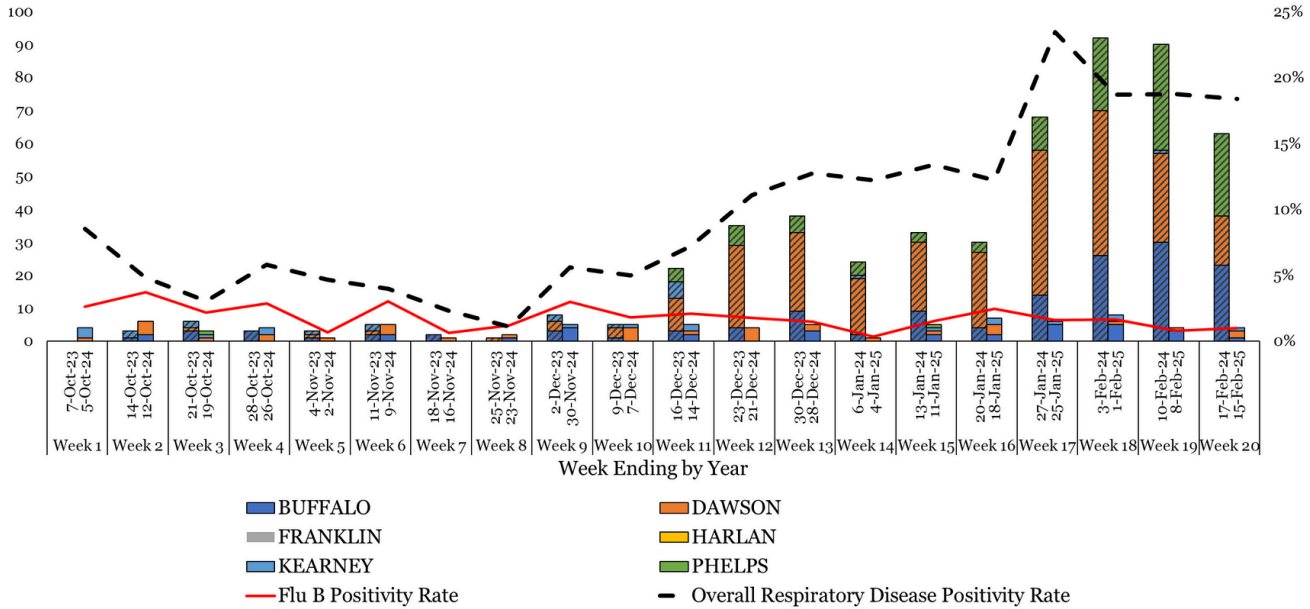
- Influenza A incidence dropped for the third week in a row, although still over 150% of the previous year's rates.
- Over 1/3rd of all flu A tests returned positive in the last week across TRPHD.



TRPHD Flu Cases

February 15, 2025

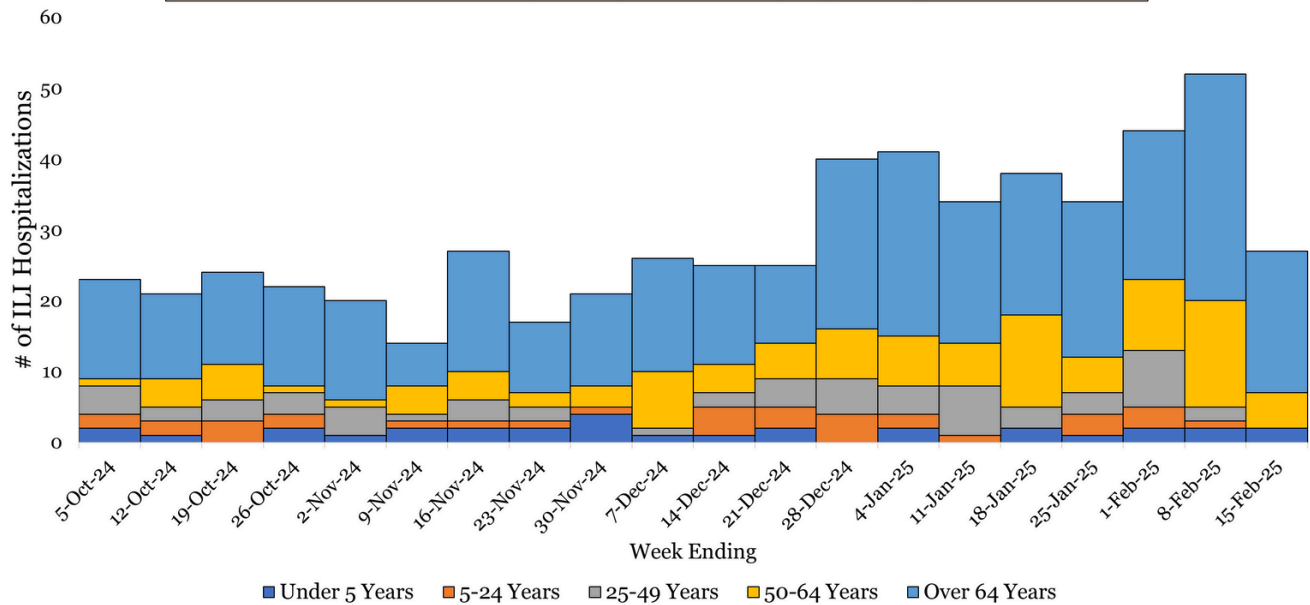
Incidence of Flu B in TRPHD by Week
October 6 - February 15 (2023-2024 Season Comparison)



Influenza

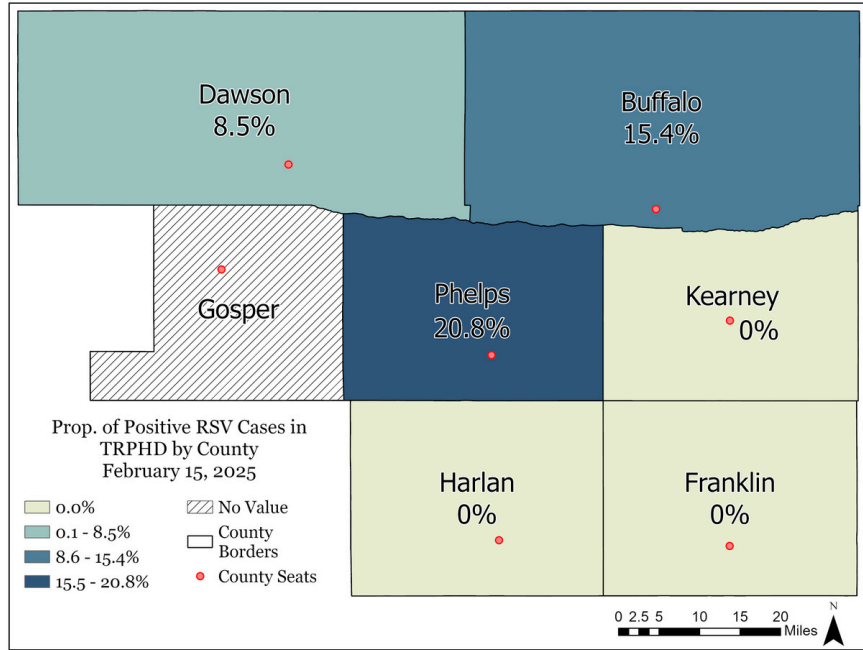
- Influenza B numbers are low, hospitalizations due to influenza-like-illnesses (ILI) have increased since mid- December, especially for those aged 50 years and over.

Number of Influenza-Like Illness Hospitalizations By Age Group
October 6, 2024 - February 15, 2025



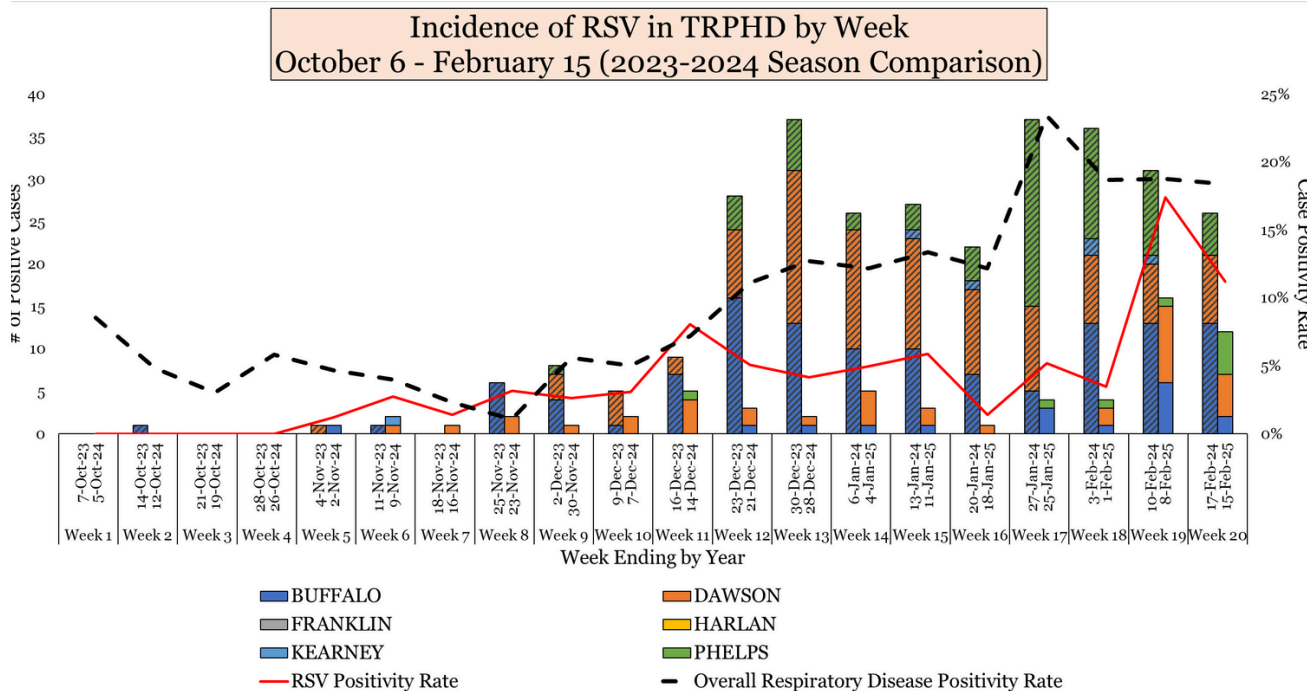
TRPHD RSV Cases

February 15, 2025



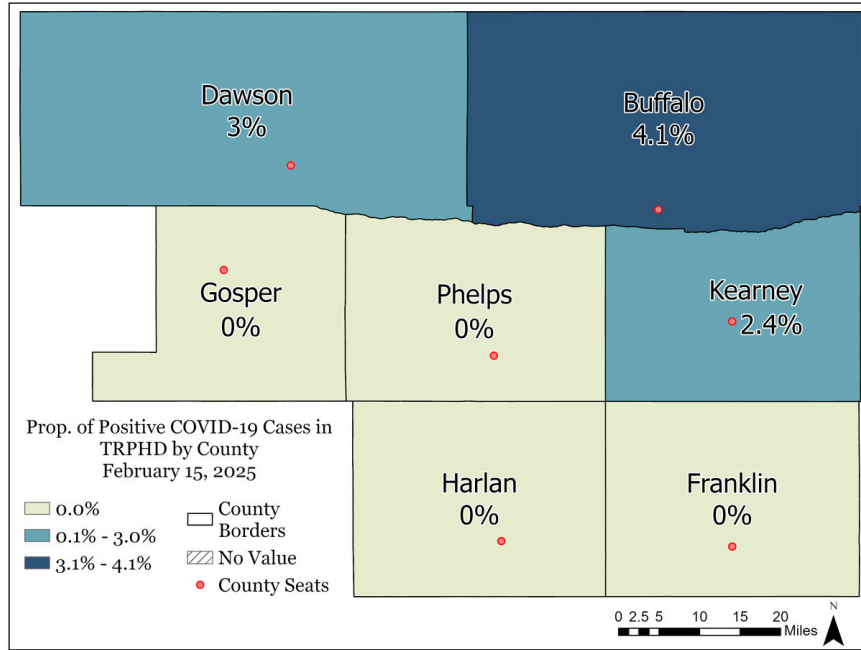
Respiratory Syncytial Virus (RSV)

- The incidence of RSV in Phelps and Dawson counties continues to remain high.
- This is less than half the incidence for the corresponding time last year.



TRPHD COVID-19 Cases

February 15, 2025



COVID-19

- COVID incidence continues to remain low across TRPHD; weekly case numbers are less than half those of a year previously.

