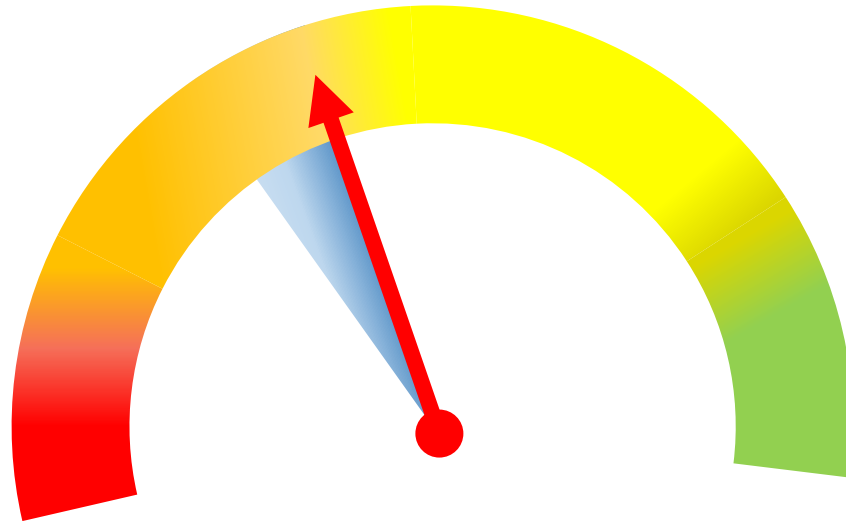


COVID RISK DIAL & COMMUNITY GUIDANCE



COVID RED: Severe COVID-19 Pandemic Outbreak

- Widespread community or regional transmission of COVID
- There is a significant increase in COVID positive cases OR percent positive cases which may potentially overwhelm the local healthcare system
- There is a significant increase in Flu-Like Symptoms and COVID-like syndromic cases which may potentially overwhelm the local healthcare system
- Hospitals are utilizing Surge Capacity
- There is an inadequate testing capacity for critical workers
- There is inadequate capacity to conduct investigation and contact tracing
- There are shortages of critical medical equipment or testing supplies
- There are PPE shortages impacting critical healthcare workers

General Public	Outside the Home – Work, Social, in Public	At Home
Physical Distancing	<ul style="list-style-type: none"> • Stay at home unless essential personnel traveling for work, or general public acquiring medical care or food • Distance at least 6 feet from anyone outside the home • Work from home • No contact with others 	<ul style="list-style-type: none"> • No distancing for people without symptoms, unless they are under quarantine as a result of being exposed to someone who is infected • Self-isolation of symptomatic persons
Face Covering	<ul style="list-style-type: none"> • Face coverings when outside of the home and near others 	<ul style="list-style-type: none"> • No face coverings for people without symptoms, unless they are under quarantine as a result of being exposed to someone who is infected • Face coverings for symptomatic people
Hand Washing	<ul style="list-style-type: none"> • Frequently wash hands for at least 20 seconds, especially after touching high contact surfaces, sneezing/coughing/touching face, or before eating • Use hand sanitizer when handwashing is inaccessible or infeasible 	<ul style="list-style-type: none"> • Frequently wash hands for at least 20 seconds, especially after touching high contact surfaces, sneezing/coughing/touching face, or before eating
Illness Monitoring	<ul style="list-style-type: none"> • If ill with Flu-like or COVID-like symptoms, Stay at Home even for essential personnel • Minimize contact with symptomatic people • Daily temperature checks at work 	<ul style="list-style-type: none"> • Daily temperature check • Continuously monitor for COVID-19 symptoms • Self-isolation of symptomatic persons • Contact healthcare provider if sick • Monitor the health of anyone in your home with COVID-like symptoms
Disinfecting	<ul style="list-style-type: none"> • Avoid bare hand contact with any high touch surface • Use barrier such as paper towel or clothing when bare hand contact is unavoidable • Wash hands or apply sanitizer after touching high contact surfaces • Enhanced disinfection, especially for high contact surfaces (door/other handles, light switches, bathroom fixtures) 	<ul style="list-style-type: none"> • Avoid bare hand contact with any high touch surface • Use barrier such as paper towel or clothing when bare hand contact is unavoidable • Wash hands or apply sanitizer after touching high contact surfaces • Enhanced disinfection, especially for high contact surfaces (door/other handles, light switches, bathroom fixtures)
At-Risk or Vulnerable Population	<p>For those over age 65, people with underlying health conditions, and other populations at heightened risk from COVID-19</p> <ul style="list-style-type: none"> • Stay home • Rely on help for needs outside the home (groceries, medications, etc.) • Distance from those working outside of the home 	

COVID ORANGE: Elevated COVID-19 Spread Risk

- There are increasing or high stable numbers of COVID positive cases OR percent positive cases due to community or regional spread
- There is an increase in Flu-Like Symptoms OR COVID like syndromic cases in Buffalo, Dawson, Franklin, Gosper, Harlan, Kearney, and Phelps Counties or regionally
- Clusters or outbreaks exist that are still likely in their early stages
- There is only enough testing available for symptomatic people
- TRPHD must rely on assistance to conduct investigation for new cases and associated and contact tracing OR TRPHD must assist adjacent jurisdictions to conduct investigation and contact tracing
- PPE supplies are only adequate for critical healthcare workers
- Critical medical equipment is in limited supply

General Public	Outside the Home – Work, Social, In Public	At Home
Physical Distancing	<ul style="list-style-type: none"> • Stay at home unless traveling for work, medical care, or food • Distance at least 6 feet from anyone outside the home • Work from home if possible • Individual outdoor activities such as walking, biking, etc. are acceptable • Smallest number of contacts feasible • No large gatherings or events, no more than 25 people 	<ul style="list-style-type: none"> • No distancing for people without symptoms, unless they are under quarantine as a result of being exposed to someone who is infected • Self-isolation of symptomatic persons • Outdoor activities with members of your household are acceptable
Face Covering	<ul style="list-style-type: none"> • Face coverings strongly recommended for anyone over 2 years old 	<ul style="list-style-type: none"> • No face coverings for people without symptoms, unless they are under quarantine as a result of being exposed to someone who is infected • Face coverings for symptomatic people
Hand Washing	<ul style="list-style-type: none"> • Frequently wash hands for at least 20 seconds, especially after touching high contact surfaces, sneezing/coughing/touching face, or before eating • Use hand sanitizer when handwashing is inaccessible or infeasible 	<ul style="list-style-type: none"> • Frequently wash hands for at least 20 seconds, especially after touching high contact surfaces, sneezing/coughing/ touching face, or before eating
Illness Monitoring	<ul style="list-style-type: none"> • If sick with Flu-like or COVID-like symptoms, Stay at Home • Minimize contact with symptomatic people • Daily temperature checks at work 	<ul style="list-style-type: none"> • Daily temperature checks • Monitor for COVID-like symptoms • Contact healthcare provider if sick • Monitor the health of anyone in your home with COVID-like symptoms
Disinfecting	<ul style="list-style-type: none"> • Avoid bare hand contact with any high touch surface • Use barrier such as paper towel or clothing when bare hand contact is unavoidable • Wash hands or apply sanitizer after touching high contact surfaces • Enhanced disinfection, especially for high contact surfaces (door/other handles, light switches, bathroom fixtures) 	<ul style="list-style-type: none"> • Enhanced disinfection, especially for high contact surfaces (door/other handles, light switches, bathroom fixtures)
At-Risk or Vulnerable Population	<p>For those over age 65, people with underlying health conditions, and other populations at heightened risk from COVID-19</p> <ul style="list-style-type: none"> • Stay home • Rely on help for needs outside the home (groceries, medications, etc.) • Distance from those working outside of the home 	

COVID Yellow: Moderate Risk of COVID-19 Spread

- There is a downward trajectory in numbers of COVID positive cases OR percent positive cases due to community or regional spread
- There is a downward trajectory in levels of Flu-Like Symptoms OR COVID like syndromic cases in Buffalo, Dawson, Franklin, Gosper, Harlan, Kearney, and Phelps Counties or regionally
- There is limited community spread within Buffalo, Dawson, Franklin, Gosper, Harlan, Kearney, and Phelps Counties or regionally
- COVID has a small impact on the local healthcare system capacity
- PPE supplies are adequate for critical healthcare workers and community needs
- Rapid COVID testing is available for all suspected cases and focused asymptomatic surveillance.
- TRPHD is able to conduct investigation and contact tracing for new cases and associated contacts without assistance
- Critical medical equipment is readily available

General Public	Outside the Home – Work, Social, In Public	At Home
Physical Distancing	<ul style="list-style-type: none"> • Consider staying at home most of the time, with caution for non-essential travel and work • Distance at least 6 feet from anyone outside the home • Work from home if possible • Individual outdoor activities such as walking, biking, etc. are acceptable • Cautious expansion of interactions with others, outdoor activities preferred • Gatherings only with modifications for COVID-19 • Events only as guided by TRPHD 	<ul style="list-style-type: none"> • No distancing for people without symptoms, unless they are under quarantine as a result of being exposed to someone who is infected • Self-isolation of symptomatic persons • Outdoor activities with distancing are acceptable.
Face Covering	<ul style="list-style-type: none"> • Face coverings suggested when unable to distance • Face coverings for symptomatic people 	<ul style="list-style-type: none"> • No face coverings for people without symptoms, unless they are under quarantine as a result of being exposed to someone who is infected • Face coverings for symptomatic people
Hand Washing	<ul style="list-style-type: none"> • Frequently wash hands for at least 20 seconds, especially after touching high contact surfaces, sneezing/coughing/touching face, or before eating • Use hand sanitizer when handwashing is inaccessible or infeasible 	<ul style="list-style-type: none"> • Frequently wash hands for at least 20 seconds, especially after touching high contact surfaces, sneezing/coughing/touching face, or before eating
Illness Monitoring	<ul style="list-style-type: none"> • If ill with Flu-like or COVID-like symptoms, Stay at Home • Minimize contact with symptomatic people • Daily temperature checks at work 	<ul style="list-style-type: none"> • Monitor for COVID-like symptoms
Disinfecting	<ul style="list-style-type: none"> • Avoid bare hand contact with any high touch surface • Use barrier such as paper towel or clothing when bare hand contact is unavoidable • Wash hands or apply sanitizer after touching high contact surfaces • Enhanced disinfection, especially for high contact surfaces (door/other handles, light switches, bathroom fixtures) 	<ul style="list-style-type: none"> • Enhanced disinfection, especially for high contact surfaces (door/other handles, light switches, bathroom fixtures)
At-Risk or Vulnerable Population	<p>For those over age 65, people with underlying health conditions, and other populations at heightened risk from COVID-19</p> <ul style="list-style-type: none"> • Stay home • Rely on help for needs outside the home (groceries, medications, etc.) • Distance from those working outside of the home 	

COVID Green: Low Risk of COVID-19 Spread

- Minimal cases of COVID-19 within the community.
- COVID-19 has minimal impact on local healthcare system
- Viral and antibody testing is readily available
- There are effective treatment modalities for COVID-19 and an effective vaccine is widely available
- PPE is easily obtainable through standard supply chains

General Public	Outside the Home – Work, Social, In Public	At Home
Physical Distancing	<ul style="list-style-type: none"> • No distancing, resumption of normal work and community life • Resume normal travel with considerations of COVID activity in destinations 	<ul style="list-style-type: none"> • No distancing for people without symptoms, unless they are under quarantine as a result of being exposed to someone who is infected • Self-isolation of symptomatic persons
Face Covering	<ul style="list-style-type: none"> • No face coverings for healthy people • Face coverings for symptomatic people 	<ul style="list-style-type: none"> • No face coverings for people without symptoms, unless they are under quarantine as a result of being exposed to someone who is infected • Face coverings for symptomatic people
Hand Washing	<ul style="list-style-type: none"> • Frequently wash hands for at least 20 seconds, especially after touching high contact surfaces, sneezing/coughing/touching face, or before eating • Use hand sanitizer when handwashing is inaccessible or infeasible 	<ul style="list-style-type: none"> • Frequently wash hands for at least 20 seconds, especially after touching high contact surfaces, sneezing/coughing/ touching face, or before eating
Illness Monitoring	<ul style="list-style-type: none"> • If ill with Flu-like or COVID-like symptoms, Stay at Home • Minimize contact with symptomatic people 	<ul style="list-style-type: none"> • Be aware of COVID-like symptoms • Contact medical care provider if you have COVID-like symptoms
Disinfecting	<ul style="list-style-type: none"> • Increased awareness of germ transmission through high contact surfaces • Incorporation of COVID-19 disinfection practices for high touch surfaces • Avoid bare hand contact with any high touch surface • Use barrier such as paper towel or clothing when bare hand contact is unavoidable • Wash hands or apply sanitizer after touching high contact surfaces • Normal disinfection, especially for high contact surfaces (door/other handles, light switches, bathroom fixtures) 	<ul style="list-style-type: none"> • Increased awareness of germ transmission through high contact surfaces • Normal disinfection practices, with consideration for high contact surfaces (door/other handles, light switches, bathrooms)
At-Risk or Vulnerable Population	<p>For those over age 65, people with underlying health conditions, and other populations at heightened risk from COVID-19</p> <ul style="list-style-type: none"> • You do not have to stay home at all times, but should continue physical distancing when possible in public settings. • Cautious expansion of interactions with others, reengage in small social settings, outdoor activities preferred • Avoid large group settings and events with many people 	

Two Rivers Public Health Department would like to credit Lincoln Lancaster County Health Department for creating this measurement of SARS-CoV-2 locally.

